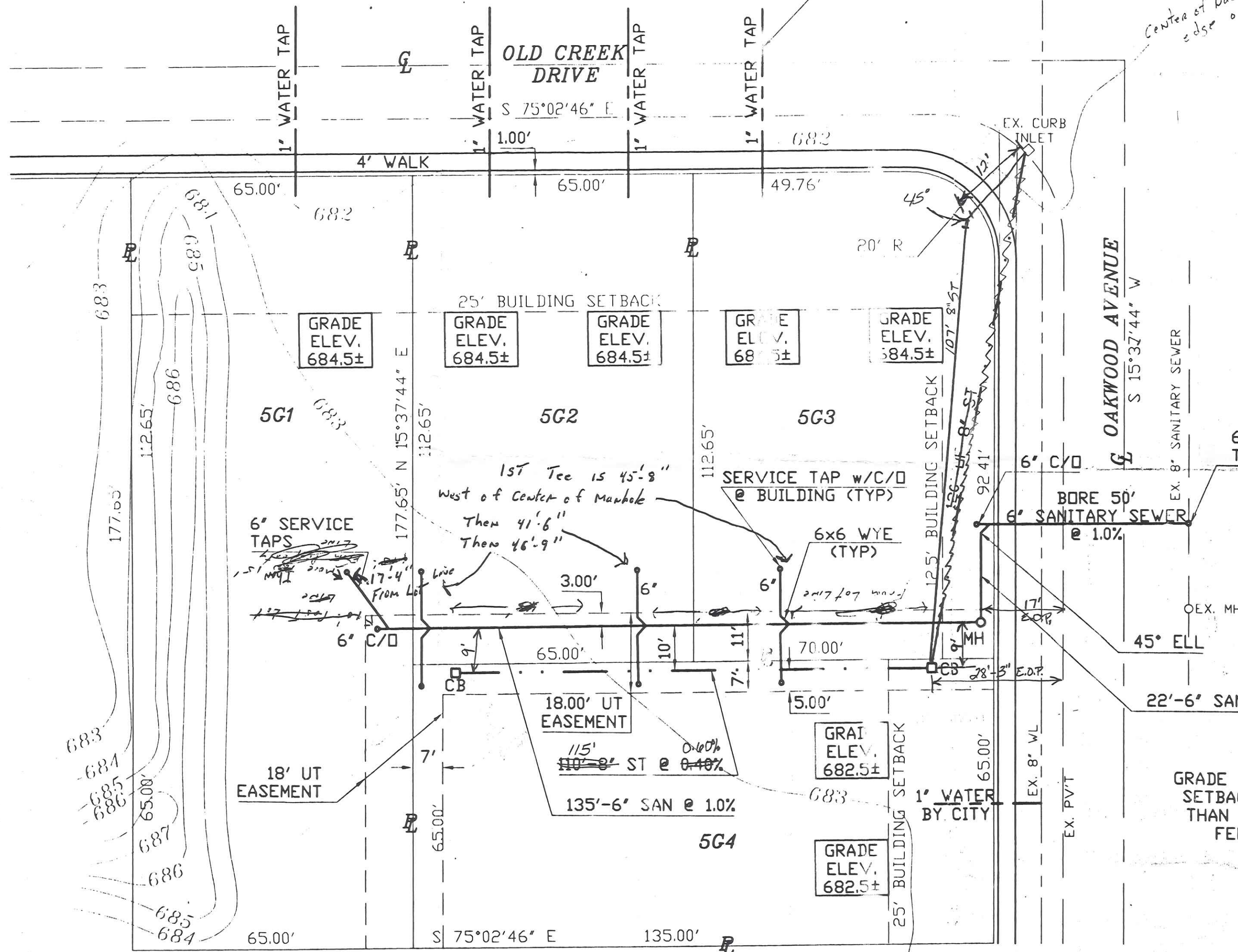


OLD CREEK SQUARE A SUBDIVISION OF LOT 5G SITE PLAN

BY CITY OF NAPOLEON



1st Basin 3'-1" Below Sidewalk
Center of Basin 15' from edge of Sidewalk

Electric & Gas is OK for Storm Sewer at Curb & Whole Distance

Water Main is between Sidewalk & Curb, may be in way of catch basin. Water main is on East side of Catch Basin out of way.

There should be no UTILITIES IN way of STORM SEWER.

Stone 13 Top 57-
Kieth Cell 579-0248

SCALE: 1"=20'

6" TAP & 6" RISER TO 7' BELOW GRADE

BORE 50' 6" SANITARY SEWER @ 1.0%

O.E.X. MH 45° ELL

22'-6" SAN

GRADE ELEVATION OF BUILDING AT SETBACK LINE NOT TO BE LESS THAN 2 FEET NOR MORE THAN 3 FEET ABOVE CURB GRADE.



Anthony H. Hoeffel

OLD CREEK SQUARE
SUBDIVISION OF LOT 5G

SITE PLAN

NOTES
ROOF DRAINS, FOUNDATION DRAINS, & OTHER CLEAN WATER CONNECTIONS TO THE SANITARY SEWER ARE PROHIBITED.
18" VERTICAL & 10' HORIZONTAL SEPARATION SHALL BE MAINTAINED BETWEEN WATER LINE & SANITARY SEWER.

SCALE: 1"=20'	DATE: 10/01/03	DWN BY: <i>ETH</i>	1
BRYAN ENGINEERING & SURVEYING ANTHONY H. HOFFEL 128 S. LYNN ST. BRYAN, OH 43506 1-419-636-2060			1

20' 8" 2' 2" 193

133

Can be 42"
15' Basin with
ON File

Cut Hole 41"
Top of Basin
from floor of Ba
Bottom of hole

Cut Hole in
7" from Flo
up To Bottom of

1434 Calveros